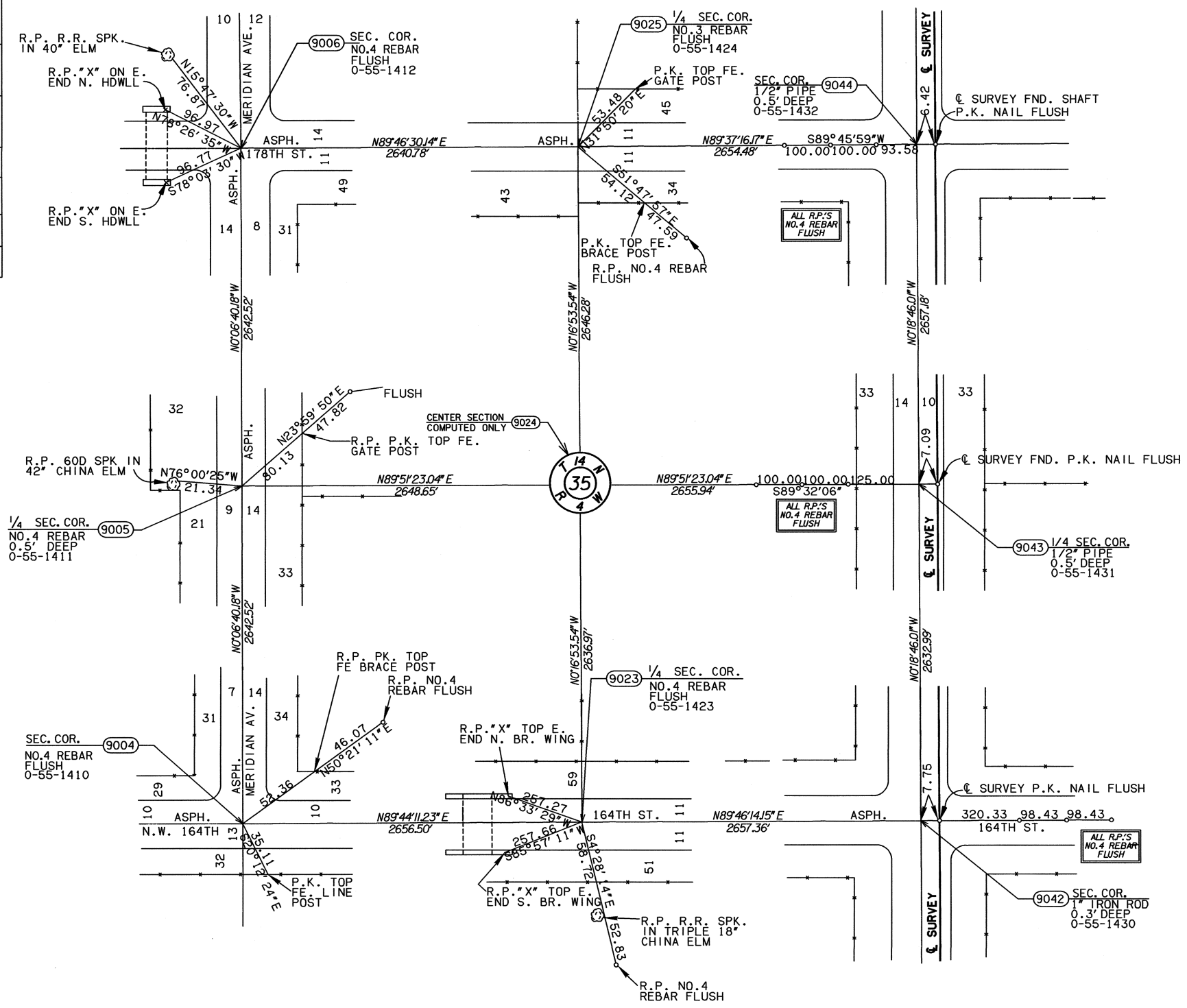
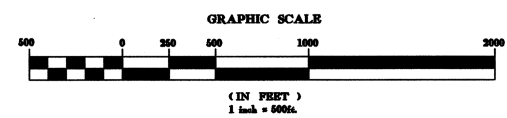


- LAND CORNER HISTORY NOTES -

9004	FND. P.K. NAIL WHICH FITS REFERENCES ON C.C.R. FILED BY JACK WEAVER P.L.S. 955 MAY 29, 1992. REPLACED P.K. NAIL FND. WITH NO.4 REBAR FLUSH AND PLACED A YELLOW PLASTIC CAP STAMPED "GUNNING SURVEYING" ON MONUMENT SET. CHECKED AND USED POSITION OF MONUMENT FOUND ON THIS SURVEY.
9005	FND. 60D SPK. 0.5 FEET DEEP WHICH FITS REFERENCES ON C.C.R. FILED BY JACK WEAVER P.L.S. 955 MAY 29, 1992. REPLACED 60D SPK. FND. WITH NO.4 REBAR 0.25 METERS DEEP AND PLACED A YELLOW PLASTIC CAP STAMPED "GUNNING SURVEYING" ON MONUMENT SET. CHECKED & USED POSITION OF MONUMENT FOUND ON THIS SURVEY.
9006	FND. P.K. NAIL WHICH FITS REFERENCES ON C.C.R. FILED BY JACK WEAVER P.L.S. 955 MAY 29, 1992. REPLACED P.K. NAIL WITH NO.4 REBAR FLUSH AND PLACED A YELLOW PLASTIC CAP STAMPED "GUNNING SURVEYING" ON MONUMENT SET. CHECKED AND USED POSITION OF MONUMENT FND. ON THIS SURVEY.
9023	FND. P.K. NAIL FLUSH SET BY LESLIE JUDD JR. P.L.S. 40 AUGUST 16, 1995. REPLACED MONUMENT FND. WITH NO.4 REBAR FLUSH AND PLACED A YELLOW PLASTIC CAP STAMPED "GUNNING SURVEYING" ON MONUMENT SET. CHECKED & USED POSITION OF MONUMENT FND. ON THIS SURVEY.
9025	FND. NO.3 REBAR FLUSH WHICH FITS REFERENCE ON C.C.R. FILED BY JACK WEAVER P.L.S. 955 JULY 16, 1992. CHECKED & USED MONUMENT FND. ON THIS SURVEY.
9042	FND. 1" IRON ROD 0.3 FEET DEEP FILED BY GORDON JAMES P.L.S. 474 MAY 21, 1990 WHICH FITS S.W.O. 2374(6) FIELD NOTES. CHECKED & USED MONUMENT FND. ON THIS SURVEY.
9043	FND. 1/2" PIPE 0.5 FEET DEEP SET BY UNKNOWN PARTIES WHICH FITS S.W.O. 2374(6) FIELD NOTES. CHECKED & USED MONUMENT FND. ON THIS SURVEY.
9044	FND. 1/2" PIPE 0.5 FEET DEEP SET BY UNKNOWN PARTIES WHICH FITS S.W.O. 2374(6) FIELD NOTES. CHECKED & USED MONUMENT FND. ON THIS SURVEY.

OKLAHOMA DEPARTMENT OF TRANSPORTATION						
FED. ROAD DIST. NO.	STATE	PROJ. NO.	FISCAL YEAR	SHEET NO.	TOTAL SHEETS	
6	OKLA.					
DESCRIPTION				REVISIONS	DATE	

Angle of Variance
At Pt. No. 9024
X= 2089356.8197
Y= 235356.8656
Lat.= 33°58'45.61"
Long.= 97°36'07.36"
θ = 00°13'33.2"



EW-94

EW-94.5

EW-95

NS-303

NS-303.5

NS-304

HAROLD GUNNING SURVEYING			
1108 EAST MAIN C.A. NO. 2248		CORDELL, OKLAHOMA 73632 EXPIRATION DATE: 6-30-2005	
PLS	GHG	OKLAHOMA DEPARTMENT OF TRANSPORTATION SURVEY DIVISION	
DRAWN	TRK	SURVEY DATA SHEET	
CHECKED		SHEET 32 OF 43	
APPROVED			
CREW		SWO 3868 (1) PROJECT NO. 14964(08) SHEET NO. S15	